



Valutazione della didattica

La valutazione della didattica dell' a.a. 2013-2014: il Corso di Studio in Biologia Molecolare

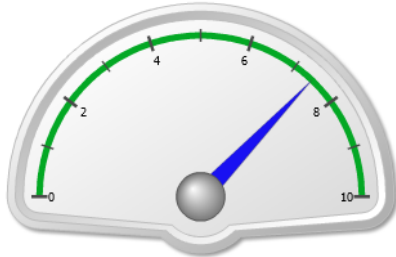




Valutazione della didattica

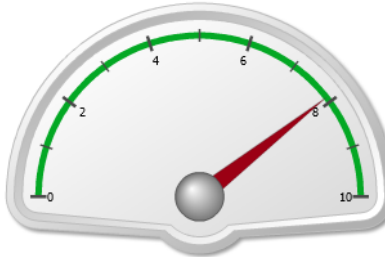
La valutazione della didattica dell' a.a. 2013-2014: Laurea in Biologia Molecolare (DM 270)

Soddisfazione Complessiva



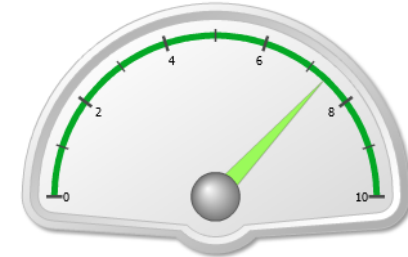
Media Soddisfazione Complessiva 7,42

Aspetti Organizzativi



Media Aspetti Organizzativi 7,88

Azione Didattica



Media Azione Didattica 7,38

AD-Docente
Valutabili

31

AD-Docente
Valutate

31

% AD-Docente
Valutate

100,0%

Questionari
Visionati

1495

Questionari
Compilati

1281

% Questionari
Compilati

85,7%

87,5% (2012-2013)

84% (2012-2013)

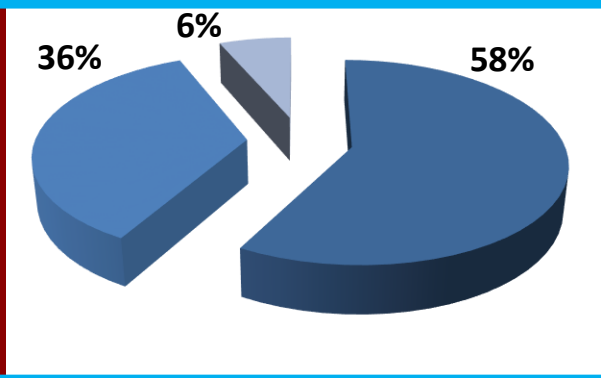
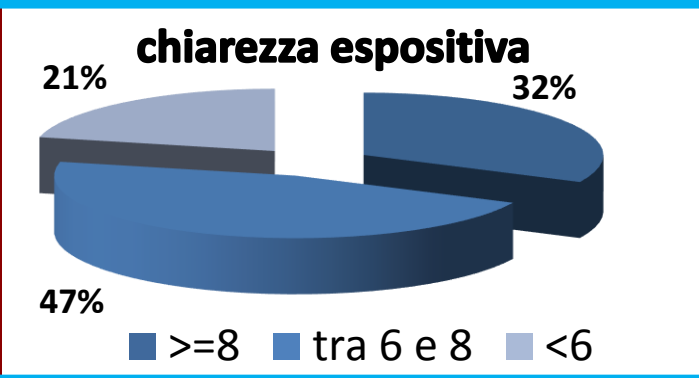
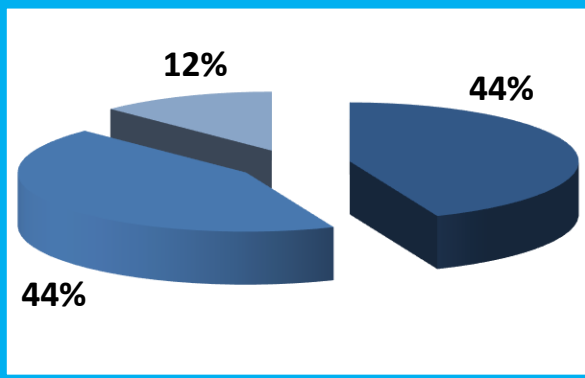
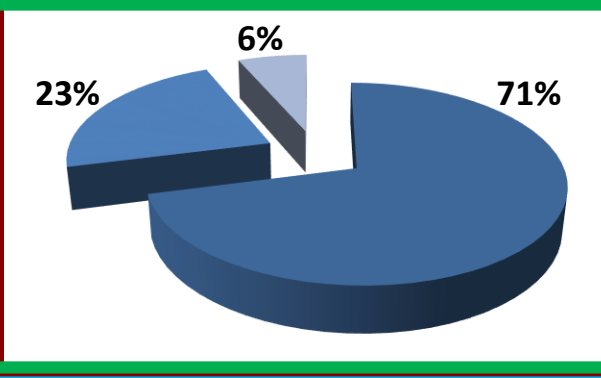
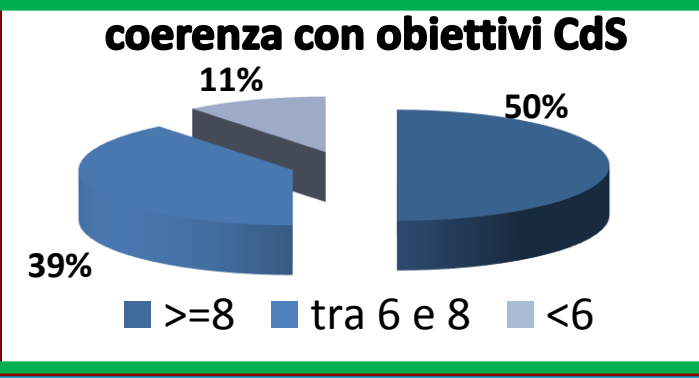
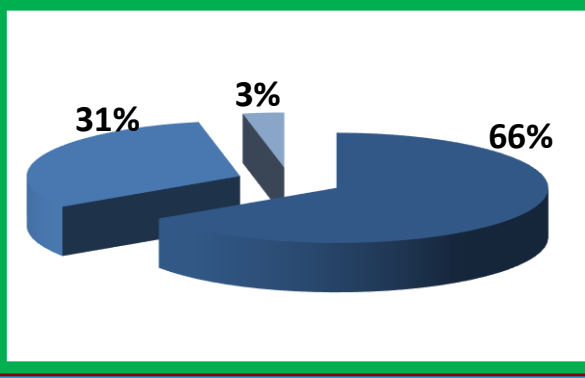
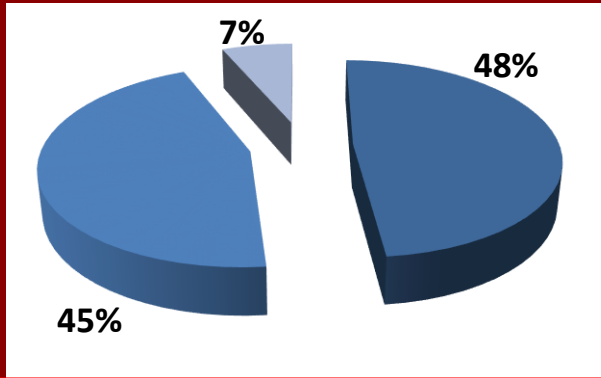
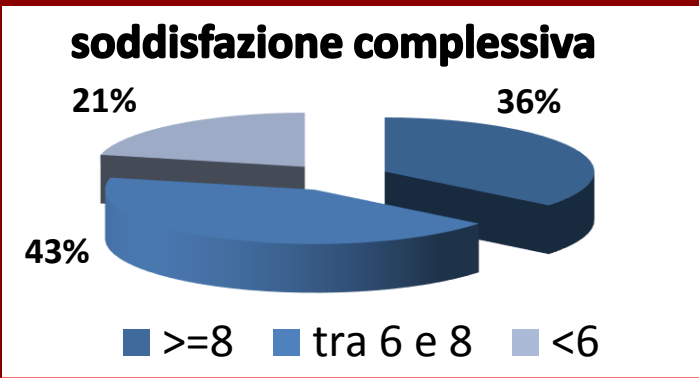
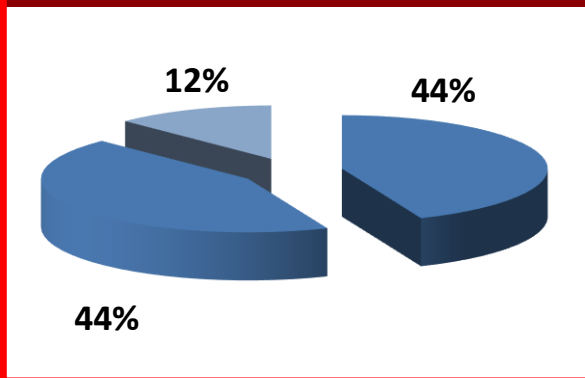


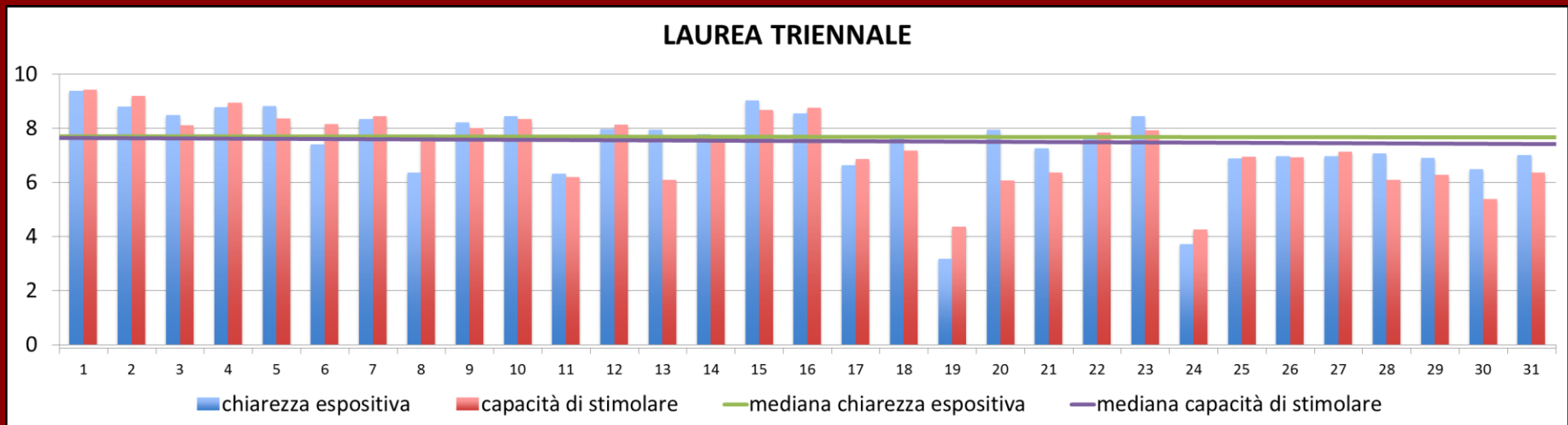
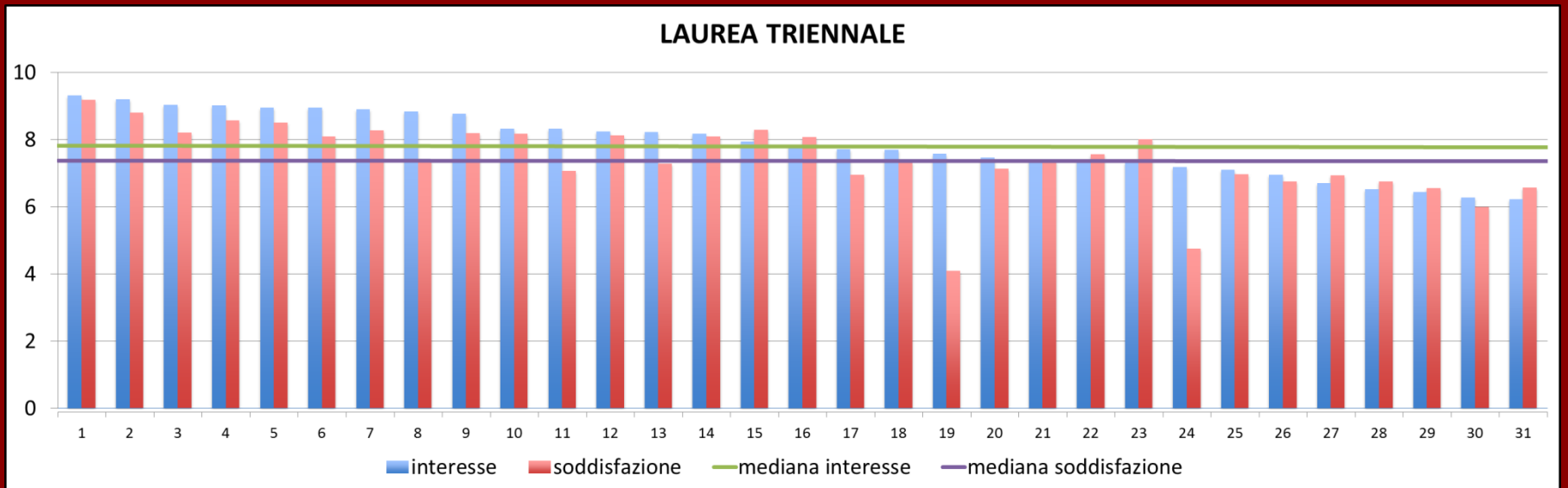
✓ **Valutazione della didattica**

2011-2012

2012-2013

2013-2014

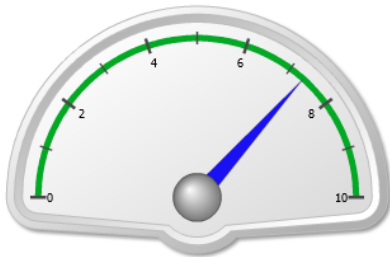




Valutazione della didattica

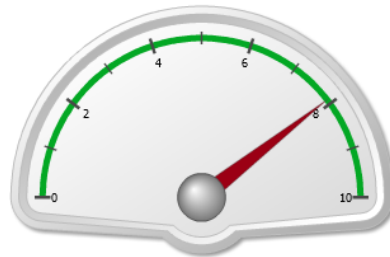
La valutazione della didattica dell' a.a. 2013-2014: Laurea Magistrale in Biologia Molecolare (DM 270)

Soddisfazione Complessiva



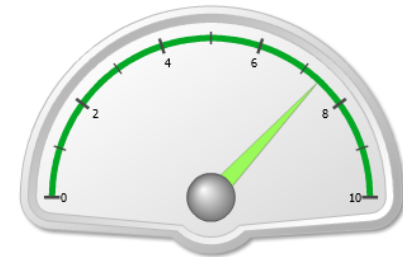
Media Soddisfazione Complessiva 7,32

Aspetti Organizzativi



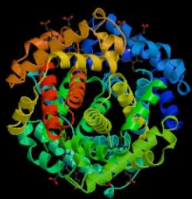
Media Aspetti Organizzativi 7,89

Azione Didattica

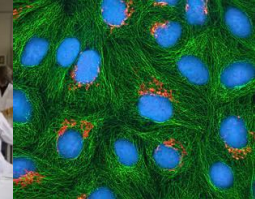
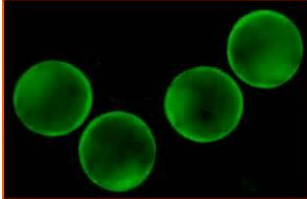


Media Azione Didattica 7,38

AD-Docente Valutabili	AD-Docente Valutate	% AD-Docente Valutate	Questionari Visionati	Questionari Compilati	% Questionari Compilati
15	15	100,0%	310	297	95,8%
100% (2012-2013)			88% (2012-2013)		



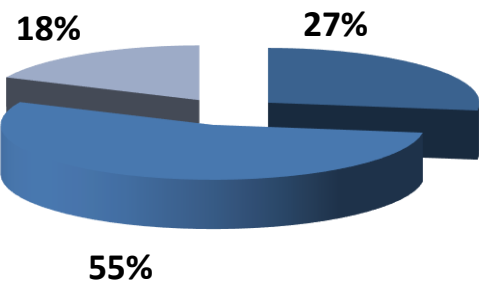
Valutazione della didattica



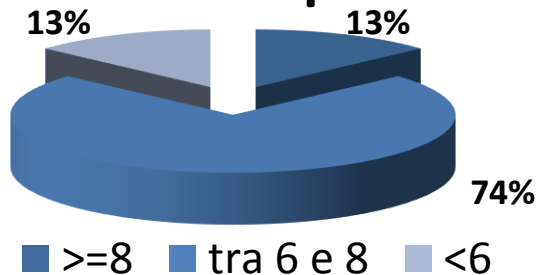
2011-2012

2012-2013

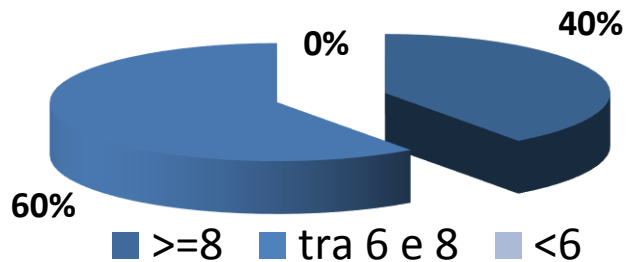
2013-2014



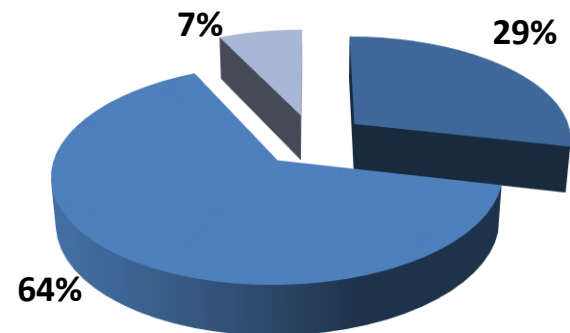
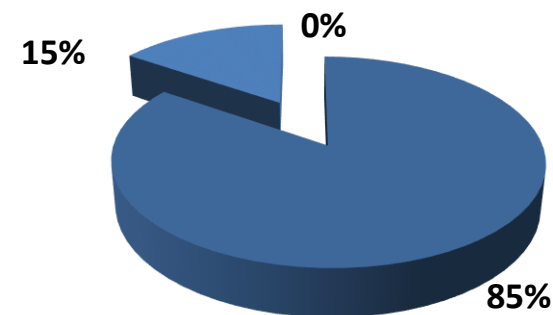
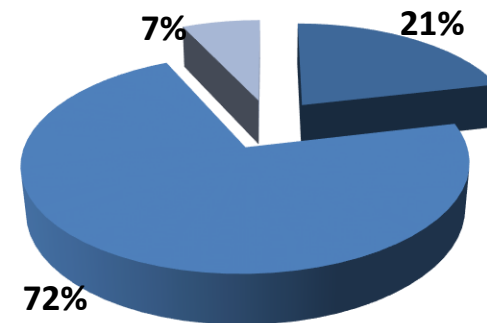
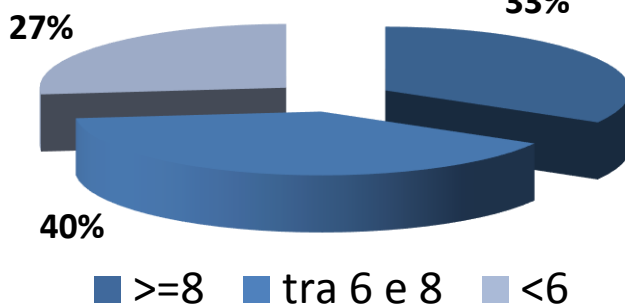
soddisfazione complessiva



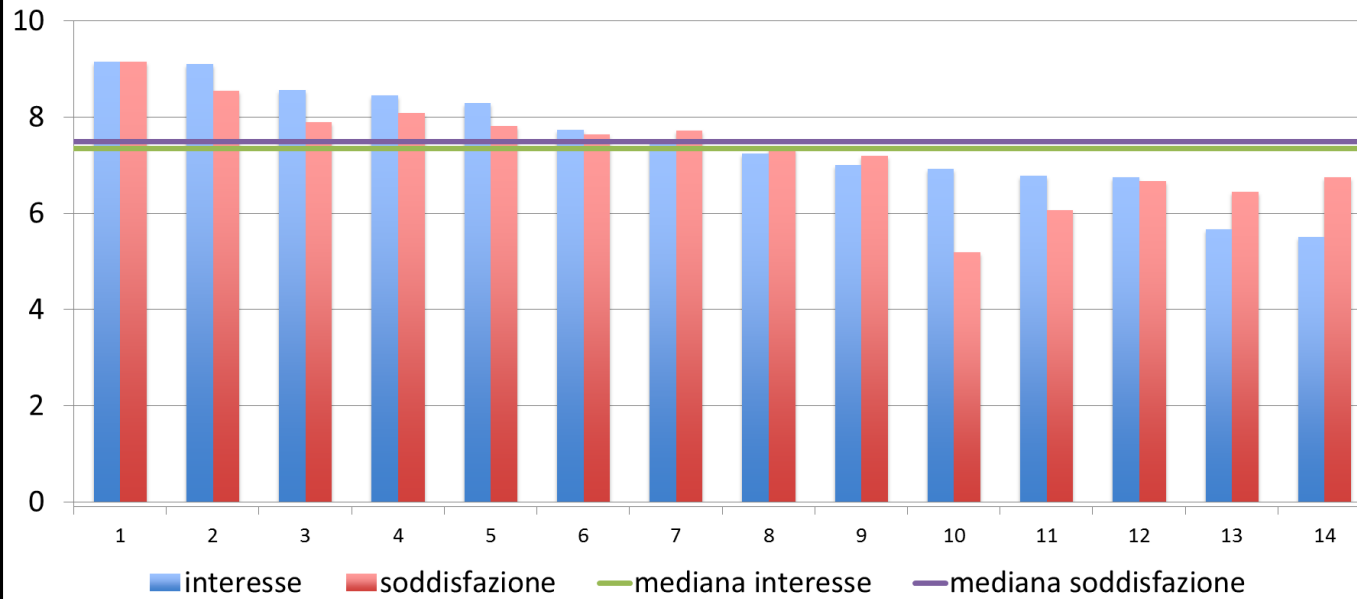
coerenza con obiettivi CdS



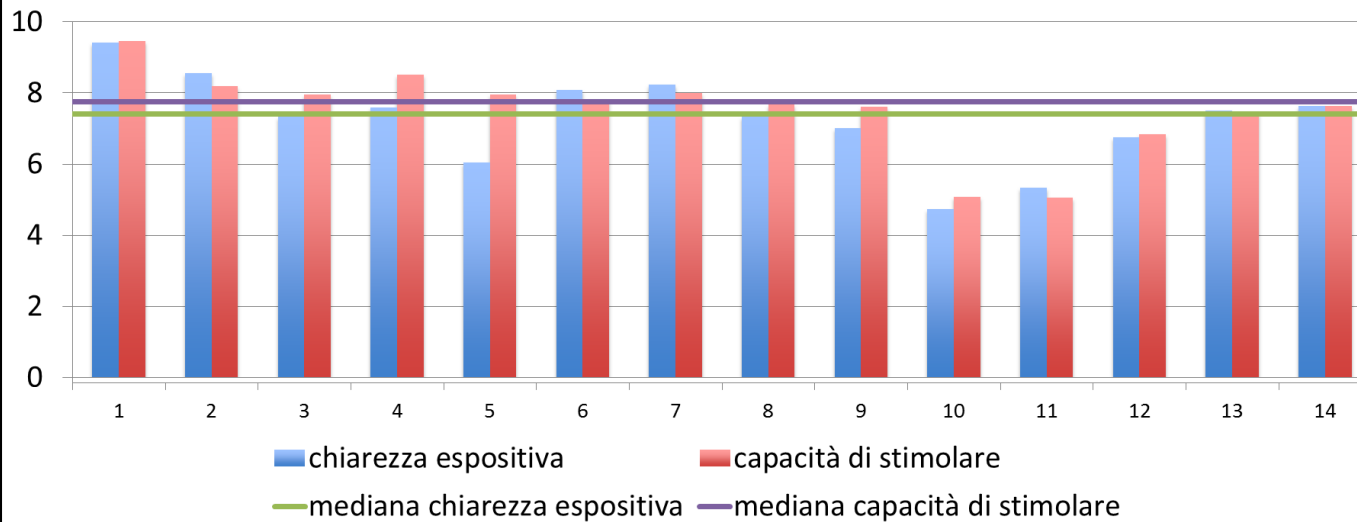
chiarezza espositiva



LM BIOLOGIA MOLECOLARE



LM BIOLOGIA MOLECOLARE

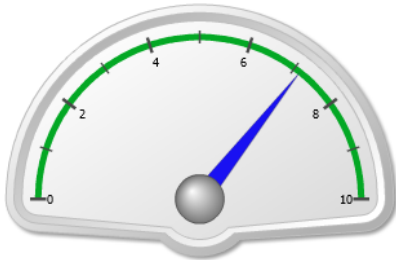




Valutazione della didattica

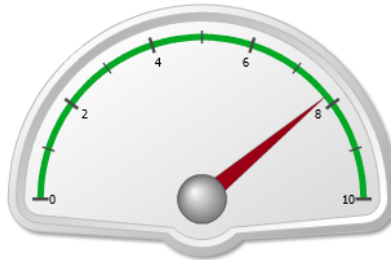
La valutazione della didattica dell' a.a. 2013-2014: Laurea Magistrale in Biologia Sanitaria (DM 270)

Soddisfazione Complessiva



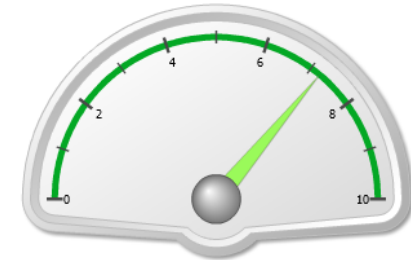
Media Soddisfazione Complessiva 7,13

Aspetti Organizzativi



Media Aspetti Organizzativi 7,8

Azione Didattica



Media Azione Didattica 7,22

**AD-Docente
Valutabili**

15

**AD-Docente
Valutate**

15

**% AD-Docente
Valutate**

100,0%

**Questionari
Visionati**

404

**Questionari
Compilati**

356

**% Questionari
Compilati**

88,1%

100% (2013-2014)

88% (2013-2014)



✓ **Valutazione della didattica**

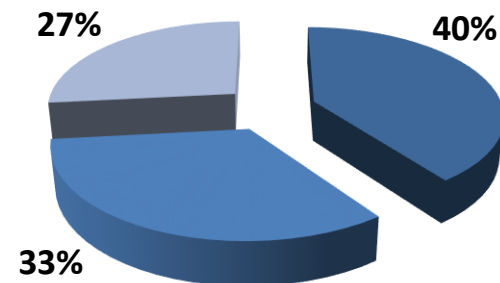
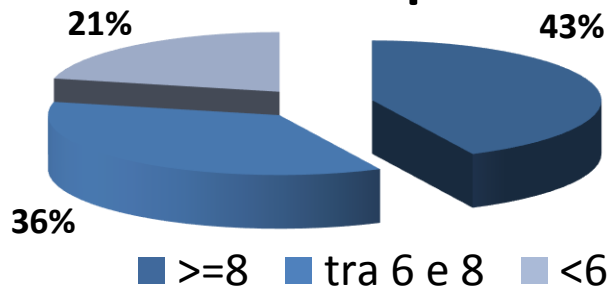
2011-2012

2012-2013

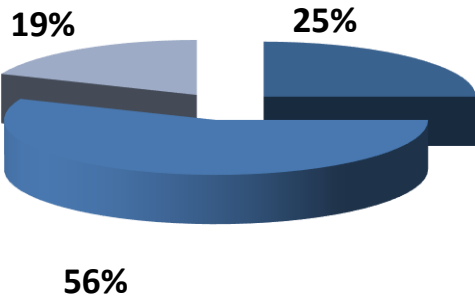
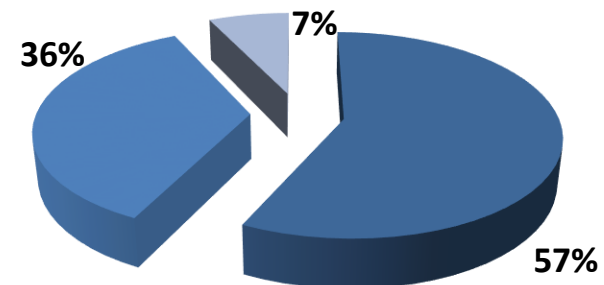
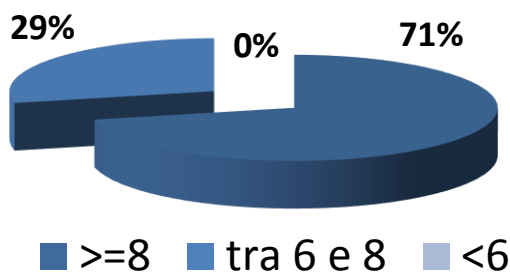
2013-2014



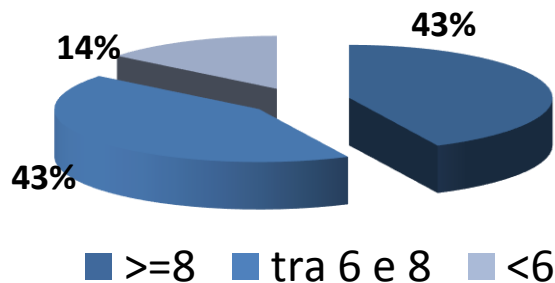
soddisfazione complessiva



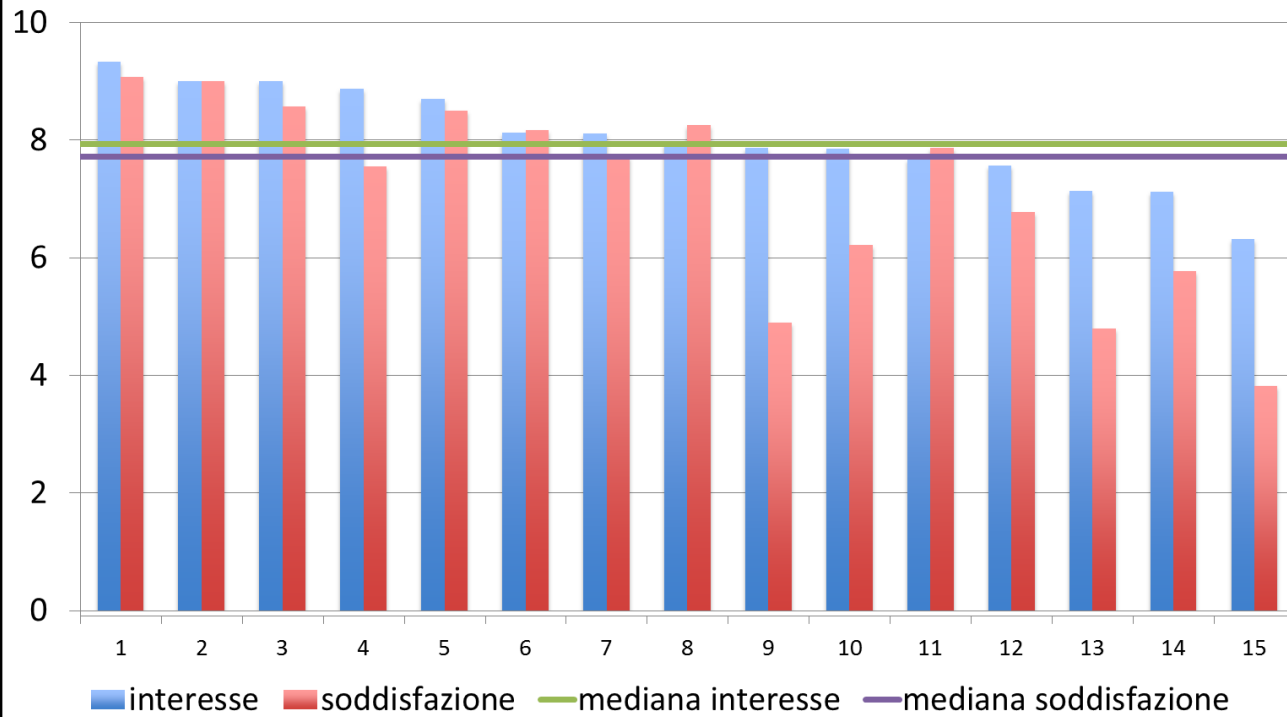
coerenza con obiettivi



chiarezza espositiva



LM BIOLOGIA SANITARIA



LM BIOLOGIA SANITARIA

